

**NEW**

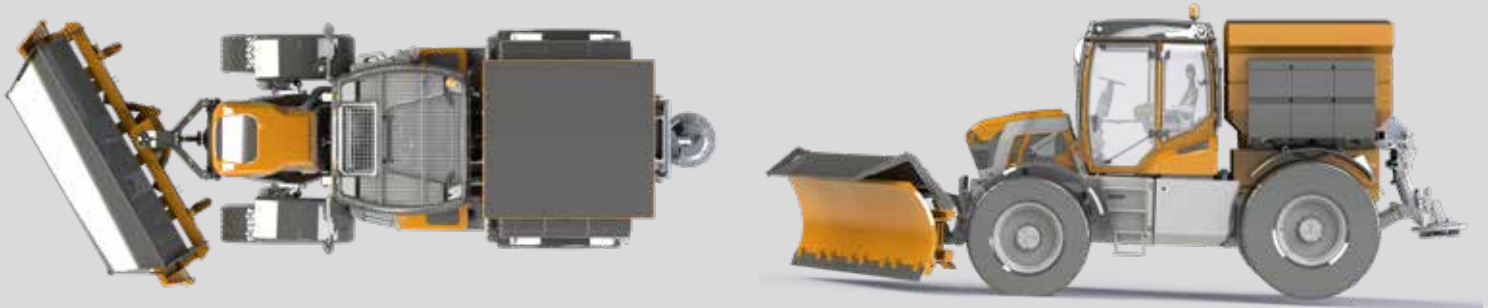
# Implement carrier K Trac



## Implement carrier K Trac

Thanks to its vehicle concept, the new implement carrier K Trac is optimized for year-round use in municipal areas and in environmental care. The hydraulic full suspension, which can be blocked automatically and 5 steering modes enable extremely safe and ergonomic work.

- ✔ **Fast** | continuously variable gearbox variaDRIVE (70 km/h)
- ✔ **Powerful** | 205, 253 or 292 hp/ up to 200 l hydraulic power
- ✔ **Agile** | Combined 4-wheel steering
- ✔ **Flexible** | 4 changeable attachment and mounting spaces
- ✔ **Comfortable** | pneumatically suspended XXL comfort cab with rotatable driver's platform or full-fledged passenger seat



Implement carrier	K Trac 1220	K Trac 1225	K Trac 1230
<b>Engine</b>	151 kW   205 hp EU V   ISO 14396	186 kW   253 hp EU V   ISO 14396	215 kW   292 hp EU V   ISO 14396
Cylinder/ capacity/ nominal speed	6   7,4 ltr.   1.950 rpm		
Type of motor	AGCO Power 74 HD		
Tank capacity	350 ltr. Diesel   40 ltr. AdBlue diesel exhaust fluid		
<b>Transmission</b>	variaDRIVE stepless (0 – 70 km/h) with reduced engine speed Forward driving modes 3, reverse driving modes 2 (optionally 90 km/h)		
Rear PTO	540 rpm   1,000 rpm		
Front PTO	1,000 rpm		
<b>Hydraulics</b>	Axial piston variable displacement pump		
	160 ltr./min, 210 bar (optional 200 ltr./min, 210 bar)		
Front/rear power lifts	optional		
Control valves	2 DW electr. Rear end (optional: additional 2 DW electr. prop. front and rear)		
LS connexion	Rear power bracket (LS connexion)		
<b>Dimensions</b>	Empty weight		
	8,200 - 9,200 kg*		
Permitted total weight	14,000 kg (optional 17,000 kg)		
Permissible axle load	6,000 kg front   11,500 kg rear		
Bearing load	2,000 kg automatic trailer coupling   3,000 kg ball head with sliding carriage		
Dimensions	4,990 mm long   2,400 mm wide (standard)   3,450 mm high* Minimum width: 2,250mm   maximum width: 2,800 mm		
Ground clearance	540 mm*		
Wheelbase	3,325 mm		
Weight distribution	VA 55 %, HA 45 %		
Turning circle	14.6 m front-axle steering   10.50 m all-wheel steering (with standard tyres)		
<b>Mounting space</b>	Width up to approx. 1,010 mm inside, above the mudguard up to max. outside width, Height up to approx. 2,820 mm depending on tyres, Length approx. 2,000 mm, also more depending on overhang		
<b>Tyres</b>	400/80 R 28 – 440/80 R 30 Nokian TRI 2 (standard)		

The range of accessories can be found online in the configurator.  
[configurator.pfanzelt.com](http://configurator.pfanzelt.com)

\* Values depend on equipment  
All information and illustrations are non-binding. Changes because of technical advantages reserved.