

Cranes with top-mounted main boom cylinder



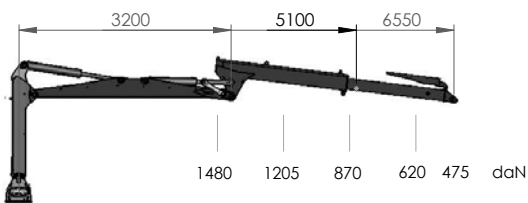
Loading crane	4167	4177	5169	5180	5186
Crane length	6,620 mm	7,550 mm	6,710 mm	8,000 mm	8,800 mm
Crane column	2,120 mm	2,120 mm	2,485 mm	2,485 mm	2,485 mm
Lifting torque gross/net	52 / 41 kNm	52 / 41 kNm	69 / 51 kNm	69 / 51 kNm	69 / 51 kNm
Telescope	simple	simple	simple	simple	double
Pivoting torque	15.2 kNm	15.2 kNm	21.5 kNm	21.5 kNm	21.5 kNm
Slewing range	370 °	370 °	370 °	370 °	370 °
Rotator, infinite	4.5 t	4.5 t	4.5 t	4.5 t	4.5 t
Grippers	Pm 230	Pm 230	Pm 230	Pm 230	Pm 230
Crane control	2 control toggles with 2 electrical functions				
Operating pressure	190 bar	190 bar	190 bar	190 bar	190 bar
Pump flow rate recommended	35-90 l/min	35-90 l/min	50-100 l/min	50-100 l/min	50-100 l/min
Weight (approx.)	1,050 kg	1,100 kg	1,150 kg	1,250 kg	1,300 kg



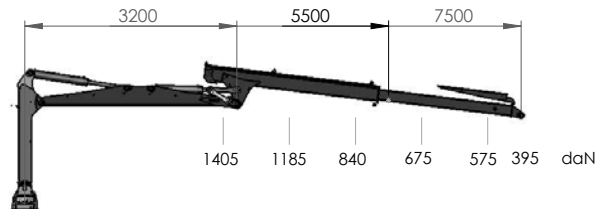
Loading crane	51100	6169	6180	6186	61100
Crane length	9,950 mm	6,710 mm	8,000 mm	8,800 mm	9,950 m
Crane column	2,485 mm	2,485 mm	2,485 mm	2,485 mm	2,485 mm
Lifting torque gross/ net	69 / 51 kNm	86 / 61 kNm	86 / 61 kNm	86 / 61 kNm	86 / 61 kNm
Telescope	double	simple	simple	double	double
Pivoting torque	21.5 kNm	25 kNm	25 kNm	25 kNm	25 kNm
Slewing range	370 °	370 °	370 °	370 °	370 °
Rotator, infinite	4.5 t	6.0 t	6.0 t	6.0 t	6.0 t
Grippers	Pm 230	Pm 230	Pm 230	Pm 230	Pm 230
Crane control	2 control toggles with 2 electrical functions				
Operating pressure	190 bar	215 bar	215 bar	215 bar	215 bar
Pump flow rate recommended	50-100 l/min	50-100 l/min	50-100 l/min	50-100 l/min	50-100 l/min
Weight (approx.)	1,450 kg	1,300 kg	1,250 kg	1,350 kg	1,450 kg



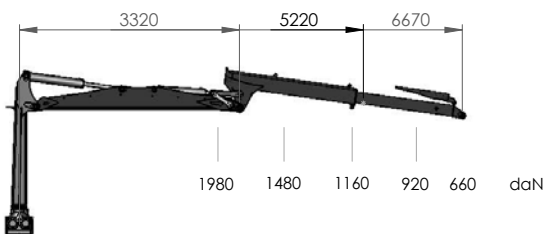
Crane 4167



Crane 4177

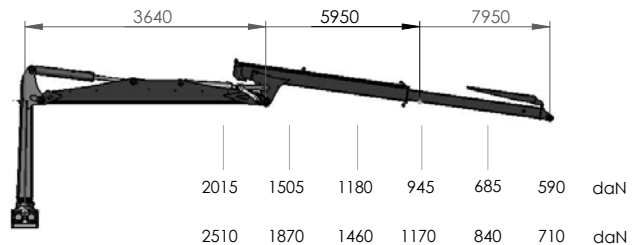


Crane 5169



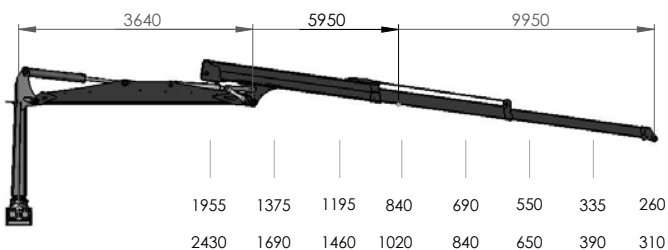
Crane 5180

Crane 6180



Crane 51100

Crane 61100



To be observed:

The stated lifting torques are maximum values and do not indicate the continuous lifting force. All figures are without gripper and rotator. The maximum lifting force can only be achieved when sufficient hydraulic pressure is provided by the tractor unit or the on-board hydraulics. The maximum system pressure must be adjusted so that the stability is assured.

Cranes with vertical main boom cylinder



Loading crane	4267	4272	4280	4282
Crane length	6,370 mm	7,140 mm	7,850 mm	7,960 mm
Crane column	2,000 mm	2,000 mm	2,000 mm	2,000 mm
Lifting torque gross/net	56 / 40.5 kNm	56 / 40.5 kNm	56 / 41 kNm	58 / 42 kNm
Telescope	simple	simple	simple	double
Pivoting torque	15.2 kNm	15.2 kNm	15.2 kNm	15.2 kNm
Slewing range	370 °	370 °	370 °	370 °
Rotator, infinite	4.5 t	4.5 t	4.5 t	4.5 t
Grippers	Pm 230	Pm 230	Pm 230	Pm 230
Crane control	2 control toggles with 2 electrical functions			
Operating pressure	190 bar	190 bar	190 bar	190 bar
Pump flow rate recommended	35-90 l/min	35-90 l/min	35-90 l/min	35 - 90 l/min
Weight (approx.)	1,050 kg	1,100 kg	1,150 kg	1,120 kg



Loading crane	5280	5287	5286	52100
Crane length	7,800 m	8,730 mm	8,600 mm	9,800 mm
Crane column	2,076 mm	2,076 mm	2,076 mm	2,076 mm
Lifting torque gross/net	70 / 50 kNm	69 / 52 kNm	70 / 50 kNm	70 / 51 kNm
Telescope	simple	double	double	double
Pivoting torque	21.5 kNm	21.5 kNm	21.5 kNm	21.5 kNm
Slewing range	370 °	370 °	370 °	370 °
Rotator, infinite	4.5 t	4.5 t	4.5 t	4.5 t
Grippers	Pm 230	Pm 230	Pm 230	Pm 230
Crane control	2 control toggles with 2 electrical functions			
Operating pressure	205 bar	190 bar	205 bar	210 bar
Pump flow rate recommended	50-100 l/min	50 - 120 l/min	50-120 l/min	50-120 l/min
Weight (approx.)	1,250 kg	1,270 kg	1,400 kg	1,400 kg

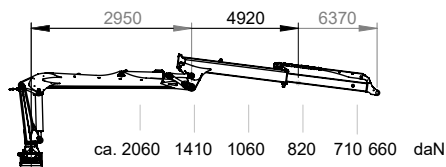
To be observed:

The stated lifting torques are maximum values and do not indicate the continuous lifting force. All figures are without gripper and rotator. The maximum lifting force can only be achieved when sufficient hydraulic pressure is provided by the tractor unit or the on-board hydraulics. The maximum system pressure must be adjusted so that the stability is assured.

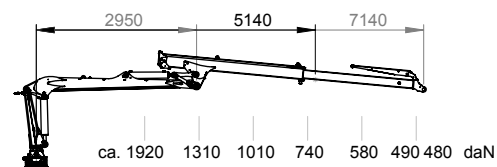


Loading crane	6280	6286	62100
Crane length	7,800 mm	8,600 mm	9,800 mm
Crane column	2,076 mm	2,076 mm	2,076 mm
Lifting torque gross/net	79 / 61 kNm	79 / 62 kNm	79 / 62 kNm
Telescope	simple	double	double
Pivoting torque	25 kNm	25 kNm	25 kNm
Slewing range	370 °	370 °	370 °
Rotator, infinite	6.0 t	6.0 t	6.0 t
Grippers	Pm 230	Pm 230	Pm 230
Crane control	2 control toggles with 2 electrical functions		
Operating pressure	220 bar	220 bar	220 bar
Pump flow rate recommended	50-120 l/min	50 - 120 l/min	50 - 120 l/min
Weight (approx.)	1,300 kg	1,450 kg	1,500 kg

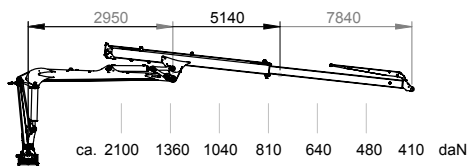
Crane 4267



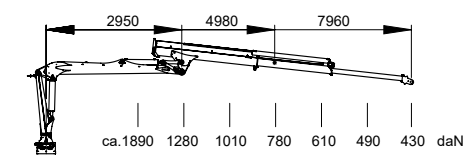
Crane 4272



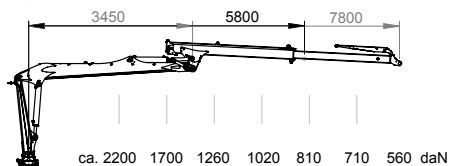
Crane 4280



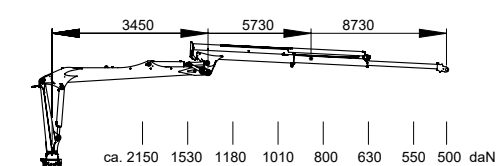
Crane 4282



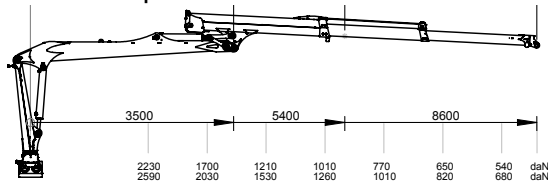
Crane 5280



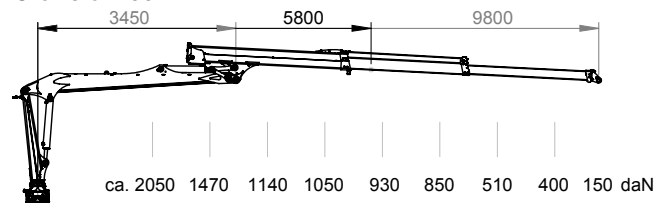
Crane 5287



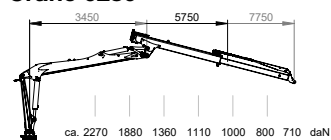
Crane 5286 | Crane 6286



Crane 52100



Crane 6280

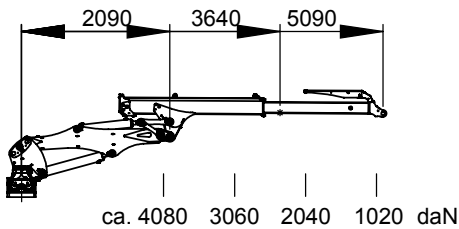


Lorry-mounted cranes for tractors

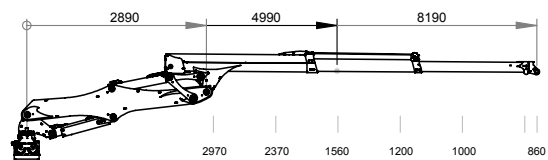


Logging crane	5153	5167	7169	7182	7185	71100
Reach	5,090 mm	6,830 mm	6,930 mm	8,190 mm	8,300 mm	10,000 mm
Crane column	---	---	---	---	1,960 mm	1,960 mm
Lifting torque gross/net	69 / 51 kNm	69 / 51 kNm	106 / 70 kNm	106 / 70 kNm	106 / 70 kNm	112 / 70 kNm
Telescope	simple	double	double	double	double	double
Pivoting torque	21.5 kNm	21.5 kNm	27 kNm	32 kNm	27 kNm	27 kNm
Slewing range	370 °	370 °	370 °	360°	360°	360°
Rotator, infinite	6.0 t	6.0 t	10.0 t	10.0 t	10.0 t	10.0 t
Grippers	Pm 270	Pm 270	Pm 360	Pm 360	Pm 360	Pm 360
Crane control	6-way EHC control with 2 joysticks					
Operating pressure	190 bar	190 bar	210 bar	210 bar	210 bar	210 bar
Pump flow rate recommended	35-90 l/min	35-90 l/min	50-100 l/min	50-100 l/min	50-100 l/min	50-100 l/min

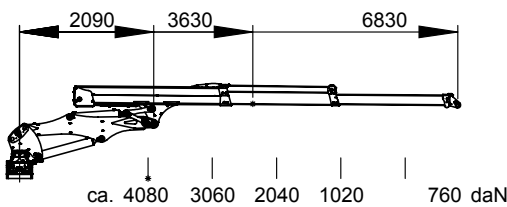
Crane 5153



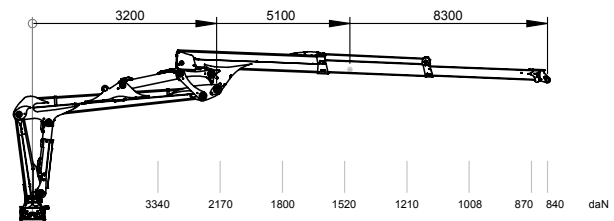
Crane 7182



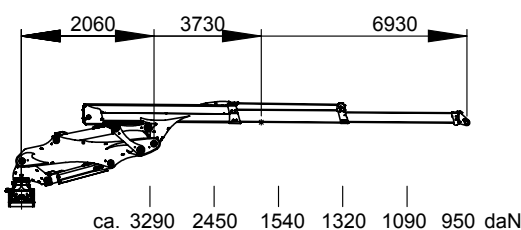
Crane 5167



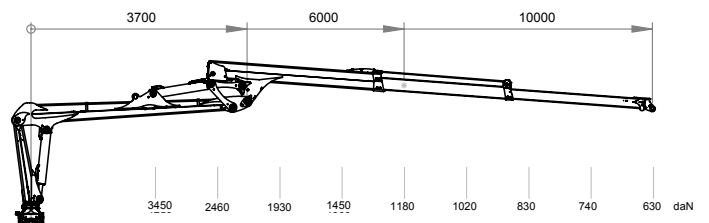
Crane 7185



Crane 7169



Crane 71100

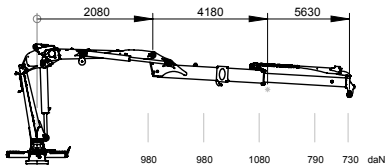


Z-cranes

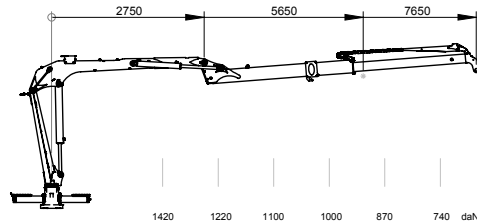


Lorry-mounted crane	Z4359	Z5376	Z5388
Crane length	5,700 mm	7,600 mm	8,800 mm
Crane column	1,740 mm	2,190 mm	2,190 mm
Lifting torque net	40.5 kNm	51 kNm	51 kNm
Telescope	simple	simple	double
Pivoting torque	15.2 kNm	21.5 kNm	21.5 kNm
Slewing range	370 °	370 °	370 °
Grippers	Pm 230	Pm 230	Pm 230
Crane control	2 control toggles with 2 electrical functions		
Operating pressure	190 bar	190 bar	200 bar
Pump flow rate recommended	35-90 l/min	35-90 l/min	50-100 l/min
Weight approx.	945 kg	1,125 kg	1,180 kg

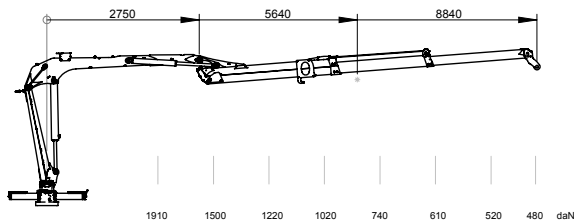
Crane Z4359



Crane Z5367



Crane Z5388



To be observed:

The stated lifting torques are maximum values and do not indicate the continuous lifting force. All figures are without gripper and rotator. The maximum lifting force can only be achieved when sufficient hydraulic pressure is provided by the tractor unit or the on-board hydraulics. The maximum system pressure must be adjusted so that the stability is assured.