



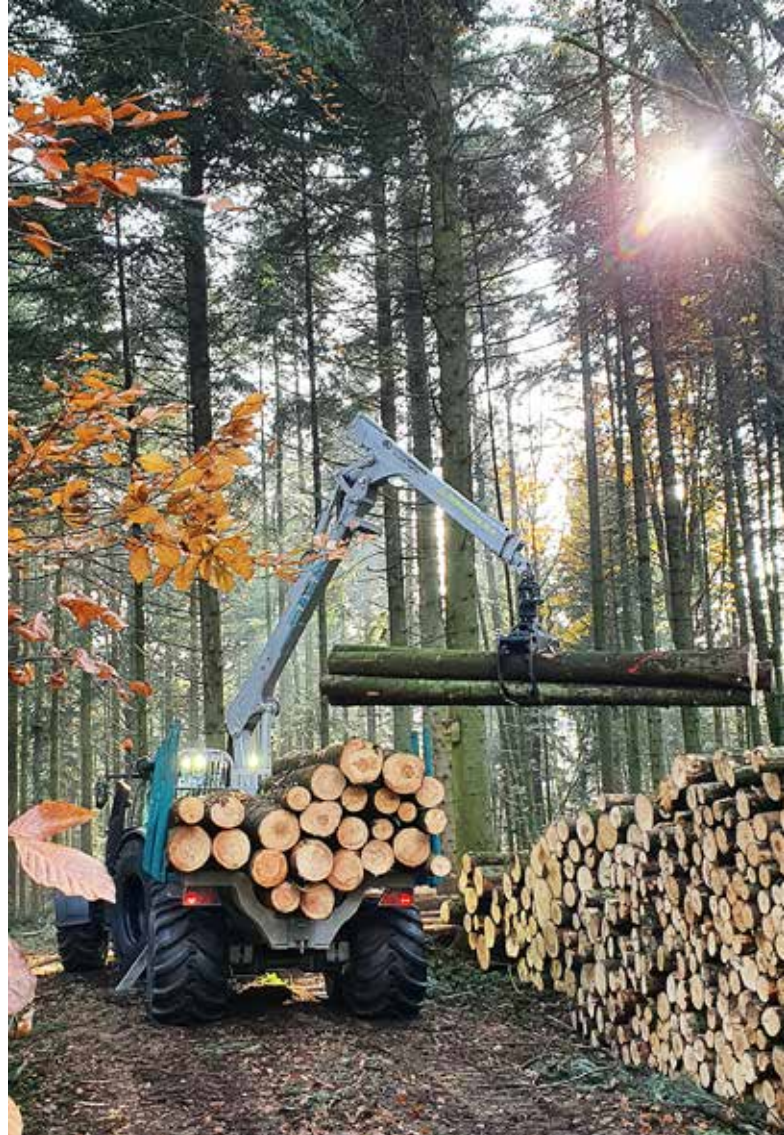
logLINE forwarding trailers

Powerful professional technology for the forestry contractor and forwarder is offered by the logLINE forwarding trailer series. The three models promise uncompromising performance and powerful economy both on forest trails and in standing timber. Optimised for powerful tractors, the forwarding trailers are equipped with a powerful crane in the 6 or 7 mt class.

Technical specs ► Page 86

Convincing technical details:

- Payload on private Roads from 13 to 17 t
- Reinforced central tubular frame with extension
- Type approval for public roads with CoC document (depending on equipment)
- Optional with sprung steering drawbar (model L16 and L19)
- Modern and powerful professional cranes with up to 10 m reach and 7 m lifting force
- Reinforced A-column stabilisers for better stability
- Two big storage boxes for lashing straps and tools
- Accessories for flexible use: Wheel hub drive, crane winch etc.



logLINE forwarding trailers live in action.
youtube.com/pfanzeltTV

logLINE forwarding trailers

Technical details at a glance:



- 1 **Power link system** – toggle lever control – guarantees manoeuvrable crane operation, greater reach and more lifting power.
- 2 A system of **protected hoses** on the complete crane guarantees minimum downtime.
- 3 The bearing arrangement of all locating pins in greasable **bronze bushings** ensures long service life and pressure stability.
- 4 The crane is designed for dynamic continuous load according to **Crane load class B4**.
- 5 Protected from damage during loading, the **cylinder** of the main arm is **twisted**.
- 6 **Rotary transmissions** maximise the functional safety and service life of the hydraulic hoses.
- 7 Massive and robust **front grilles** for optimum safety during crane operation and when driving on public roads.
- 8 **The hydraulic hoses are run in a hose shaft** to protect the user.
- 9 The large **oil storage tank** is installed in a way that it is protected from damage, and impairment of the field of vision is prevented.
- 10 Very sturdy and powerful **four-cylinder slewing gear** made of cast metal with a high swivel torque.
- 11 **Lubricating, adjustable plain bearings** guarantee a correct straight run of the axle.
- 12 **Sliding stanchion arrays** ensure safety and easy crane operation with loads of different lengths.
- 13 The **torsion-resistant central spar** is rated for the highest loads. It ensures perfect off-road handling.
- 14 Space saving **A-column stabilisers** with concealed cylinders ensure a high degree of stability when parking.
- 15 **A one-man system** for **mechanically locking** the steerable draw bar when driving on public roads.
- 16 Optionally available **crane floodlights** turn night to day and reliably illuminate the gripper zone.
- 17 The **frame extension** allows the loading area to be extended in several steps up to 1,500 mm.
- 18 Protected from damage, the **telescopic cylinder is installed inside**.
- 19 The **sliding bogie axle** guarantees optimum weight distribution for every load.
- 20 The electrically actuated **quick-action valve**, supplied as standard, ensures rapid telescopic extension of simple telescopic booms.
- 21 Equipped as standard with a powerful **flange rotator** and on request also with a **double pendulum brake**.
- 22 **Various grippers** for every application: Double clamshell bucket, 4-finger grab, earth grab
- 23 The **powerDRIVE system** enables optimum traction in difficult terrain conditions.
- 24 The **4-wheel pneumatic brake system** with accumulator offers safety under way in the forest or on the roads.

logLINE forwarding trailers

Technical details that will convince you

Frame

The strong frame construction, which is built on a torsion-resistant central spar, provides the Pfanzelt forwarding trailer with excellent off-road mobility, even when loaded. The central spar is made of fine grain steels to cope with the highest loads. Besides maximum stability, this design offers maximum ground clearance. This design offers maximum stability and ground clearance. The frame is only welded to the crane support in the front area, meaning that the strength of the central spar is not compromised. It has a double wall in the crane mounting plate area to provide the forwarding trailer with additional strength for heavy crane attachments.

For protection against damage due to driving over trunks and projecting

branches, the underside of the trailer is smooth. Cables and hoses are concealed for maximum protection.



Stanchion widening

All stanchions can be extended laterally. The stanchion cage extension is thus 300 mm. This increases the flat bed area by 0.5 m².

Frame extension

The flat bed can be extended by up to 1,500 mm for the transport of various timber lengths by means of an integrated, extensible frame extension.





Brake systems

Pfanzenlog forwarding trailers are equipped as standard with a braking system that acts on four wheels. This braking system is pneumatically actuated. The compact diaphragm brake cylinders are completely encapsulated with a protective hood. This means that the brake system is protected from damage by branches or the gripper.

Road approval

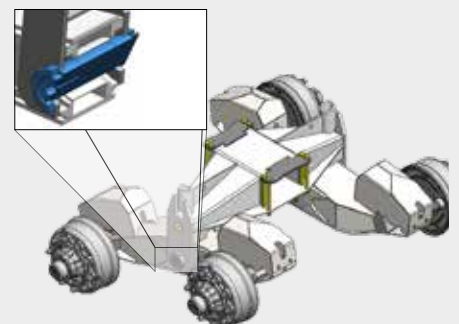
Travel on public roads is no problem for Pfanzenlog machines, even when loaded. Depending on the equipment, a CoC document is available for 25 km/h.



Bogie axle

The bogie axle on Pfanzenlog forwarding trailers provides stability and the greatest possible off-road mobility during travel. The large pendulum travel is 360 mm. This enables that the trailer can safely drive over branches.

The bogie axle is mounted on lubricatable and adjustable spherical articulated bearings. This guarantees true running for many years.





Hitch

The draw bar of the logLINE forwarding trailer is laid out in a bottom hitch version. Lubrication and adjustment of the spherical plain bearings used to support the swivel drawbar ensure many years of operational reliability for this highly stressed component. When the trailer is fitted with an independent oil supply, the powerful piston pump is installed above the drawbar to protect it from damage.



Draw bar suspension/tilt

The L16 and L19 models can be equipped with a tiller suspension/tilting system. The steering draw bar also becomes a tilting device by the provision of an additional cylinder. This feature enables the flat bed to be placed in a horizontal position and the crane column vertically on slopes.

During travel, this device acts as suspension, thus increasing driving safety and comfort.



Steerable draw bar

logLINE forwarding trailers have a swivelling drawbar with high steering angle. The maximum excursion from the centre is ± 860 mm. Two powerful hydraulic cylinders that can be operated from the tractor cab, even when the assembly is in motion, facilitate operation even when the laden forwarding trailer is turned against the slope. The pivoting torque is thus 35 kNm (at an oil pressure of 200 bar). The steerable

drawbar is mechanically locked when driving on roads.





High-sided floor pan

The pan for cut material makes it easy to transport branch or shrub material. Especially for road transport, numerous safety measures can be omitted.

The four-part pan is easily and quickly disassembled or assembled by crane and secured with tensioning straps.

It is also possible to mount the bottom plates without side walls. The pan adjusts to the stanchion width.



powerDRIVE

The hydraulic wheel drive powerDRIVE made by Pfanzelt offers a new dimension in wheel drive. It is convincing in the forest and on the road.

- Maximum thrust 6.1 t
- Proportional drive for forward and reverse travel
- All brake systems available in combination with the wheel hub drive
- Automatic drive switch-off when braking
- Freewheel for wear-free road travel

The wheel hub drive is equipped with an electric control unit by which the driver can control the drive from the tractor's cab. This allows the operator to switch between simple drive for forward drive and reverse, and hill start assist.

Type	Thrust	Speed
2WD-I	2.4 t	max. 8.8 km/h
2WD-II	3.1 t	max. 8.2 km/h
4WD-I	4.8 t	max. 4.4 km/h
4WD-II	6.1 t	max. 4.1 km/h

Data dependent on hydraulic oil quantity and pressure.



LED illumination with indicator monitoring

The lighting system using LED lights is integrated in the frame. To protect the lights when working in the forest, they are protected by a sturdy plexiglass pane.





Stowage space

On both sides of the trailer are located two bis and lockable stowing compartments. Chain saw, fuel canister and lashing strap can be stowed in these compartments.



Crane

Pfanzelt forestry cranes are designed for professional service. The Pfanzelt crane range offers loading cranes in different lifting classes. All Pfanzelt cranes have an impressive lifting force and a high pivoting torque to enable powerful pivoting of the crane – even uphill.

Technical details ► from page 92